



National Society of Black Engineers



2025-2026

CORPORATE PARTNERSHIP

Packet Prepared By: Wentworth Institute of Technology's
National Society of Black Engineers Chapter

NSBE MISSION STATEMENT

"To increase the number of culturally responsible black engineers who excel academically, succeed professionally, and positively impact the community."



Table of Contents



Letter from the President

1

Letter from the Treasurer

2

Chapter Executive Board

3

What is NSBE?

4

Programs

5

Initiatives

6

Testimonials

8

Conferences

9

Why sponsor us?

10

Sponsorship Packages

11

Corporate Response Form

12

Letter from the President

Dear Corporate Representative,

My name is Darrell Johnson, and on behalf of the Wentworth NSBE Chapter, I invite you to join us in building a better, more inclusive future in STEM. Your sponsorship is more than a donation — it's a direct investment in diversifying the engineering fields. Every dollar helps us host career-building events, connect our members to internships, bring in speakers who inspire, and fund workshops that build critical technical skills.

When you partner with us, you're helping increase the number of **culturally responsible Black engineers who excel academically, succeed professionally, and give back to their communities** — just as our mission promises. In return, you gain direct access to talented, driven students who are eager to lead and innovate.

If you pass up the chance to partner with Wentworth NSBE, you overlook an opportunity to not only support the development of Black engineers — but to elevate your own brand in the process. Our chapter is committed to building partnerships, not just collecting sponsorships. When you invest in us, we invest in you. Through intentional programming, campus visibility, and authentic engagement, we ensure that your support is seen, felt, and appreciated.

We offer real value to our partners, including:

- Brand amplification through co-branded events, social media, and merchandise
- Access to a driven, diverse talent pipeline of future engineers and tech leaders

This is more than sponsorship — it's a collaborative opportunity for both of us to grow, lead, and make lasting impact.



Darrell B. Johnson
Electrical Engineering
Class of 2028



**With Fiyah,
Darrell Johnson
Chapter President
president@witnsbe.org**



Salma A. Abdi
Computer Science
Class of 2028

Letter from the Treasurer

Dear Corporate Representative,

My name is Salma Abdi and I hope this letter finds you well. I am writing to introduce myself as a dedicated member of the National Society of Black Engineers (NSBE) at Wentworth Institute of Technology.

NSBE has been instrumental in shaping my college experience, empowering me to excel academically and develop leadership skills. Today, I reach out to you on behalf of NSBE to request your support through a generous sponsor partnership towards our organization's initiatives.

As a member of NSBE, I have witnessed the positive impact the organization has on students from diverse backgrounds pursuing careers in engineering and related fields. NSBE provides a supportive community that encourages personal and professional growth. Through NSBE, I have participated in leadership conferences, professional development workshops, and community outreach programs.

This semester, I have taken on the role of Treasurer for NSBE. My goal is to ensure the financial stability of our chapter. As Treasurer, I will manage our budget, secure funds for events and initiatives, and ensure transparent financial practices. Your generous partnership will enable us to fulfill our objectives effectively and create a lasting impact on NSBE members' lives.

Your contribution to NSBE will directly support students, enabling resources such as career fairs and networking events. Ultimately empowering our members with essential skills and connections. In order to recognize your contribution Wentworth NSBE will display your company/organization's logo on our promotional materials and event signage. This partnership will provide your company/organization exposure to a diverse talent pool of potential professionals.

With Fiyah,
Chapter Treasurer
treasurer@witnsbe.org



Chapter Executive Board

President

Darrell Johnson
Electrical Engineering
Class of 2028
president@witsnsbe.org

Vice President

Andrew Pierre
Computer Science
Class of 2027
vicepresident@witsnsbe.org

Secretary

Samson Lewis
Cybersecurity
Class of 2028
secretary@witsnsbe.org

Treasurer

Salma Abdi
Computer Science
Class of 2028
treasurer@witsnsbe.org

Senator 1

Keirston Artis
Computer Science
Class of 2028
senator1@witsnsbe.org

Senator 2

Amer Sealy
Mechanical Engineering
Class of 2028
senator2@witsnsbe.org

Programs Chair

Julia Bisse
Cybersecurity
Class 2026
programschair@witsnsbe.org

Public Relations

Fatima Ahmed
Civil Engineering
Class of 2028
PR@witsnsbe.org

Telecommunications Chair

Tarik Muhammad
Computer Science
Class of 2028
Tcomm@witsnsbe.org



What is NSBE?



The **National Society of Black Engineers (NSBE)** is one of the largest student-governed organizations in the United States. NSBE, founded in 1975, supports and promotes the aspirations of collegiate and pre-collegiate students and professionals in engineering and technology.



Our Vision:

NSBE members, chapters, and supporters are dedicated to increasing the number of culturally responsible Black Engineers who excel academically, succeed professionally and positively impact the community.



This organization has birthed hundreds of businesses, trained thousands of corporate leaders, graduated tens of thousands of engineers, and engaged hundreds of thousands of K-12 students in STEM education over its' 50-year history, both nationally and abroad.

Leadership, Technical Excellence, Academic Excellence and Mentoring are all a part of how we positively impact the community. Supporting NSBE means that you are working to build a strong legacy of leaders, innovators and skilled global citizens!

Programs

Programming

The National Society of Black Engineers is the largest organization housed under the Center for Culture and Community at Wentworth Institute of Technology. Through numerous on and off campus activities, NSBE is able to encourage and motivate the academic, professional, and social pursuits of our members. Wentworth NSBE focuses on four main pillars, Academic Excellence, Professional Development, Membership Development and Community Outreach.

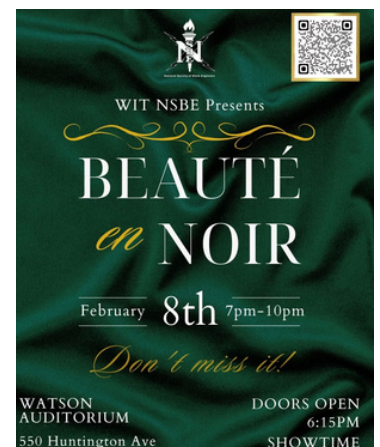
Technical Outreach

Community Help (T.O.R.C.H)

Technical Outreach Community Help (T.O.R.C.H) is a NSBE community service program which aims to use our technical backgrounds to positively impact the community.

Pre-College Initiative (P.C.I)

In our NSBE Pre-Collegiate Initiative (P.C.I) program, we encourage Black students from grades K-12 to attend college and obtain technical degrees through the facilitation of STEM-related competitions, activities, and workshops.



Initiatives

Academic Excellence

In accordance with our mission, Wentworth NSBE provides opportunities for the scholastic advancement of our members. Our bimonthly study program, also known as '**Study Jams**', is held regularly throughout the school year, offering free tutoring and study sessions for engineering courses. Wentworth NSBE also offers a **Mentor/Mentee** program to encourage collaboration between underclassmen, upperclassmen, and NSBE professionals.

Professional Development

Through Wentworth NSBE's weekly general body meetings, we provide a multitude of events for our members. These events range from **Interview Preparation** to **Resume Building**. NSBE alumni are regularly invited to discuss their professional endeavors and provide members with useful tools and wisdom through Panels. Because of the success of NSBE professionals, Wentworth NSBE can engage with a multitude of companies through **Site Visits** and events like our annual **Alumni Mixer**.



Initiatives

Membership Development

Wentworth NSBE brings its members together for **Socially Engaging Activities** outside of the classroom. These activities are integral in building a long-lasting bond and network between the members of Wentworth NSBE. As a result, members are more invested in contributing to the overall success of NSBE. This past year, Wentworth NSBE members have held an karaoke night, potluck, pie the e-board, and many other social activities.

Community Outreach

Wentworth NSBE is popularly known for our annual **Fashion Show**. At this show small businesses and students of color have the opportunity to showcase their talents to a diverse audience. Wentworth NSBE also focuses on positively impacting the community around us by participating in **Community Service Activities**, like volunteering at the Greater Boston Food Bank and participating in local park clean ups. Wentworth NSBE is also very active with our NSBE Jr. Chapter by showing hands-on STEM demonstrations through **STEM Day**. To encourage **Creative Collaboration**, Wentworth NSBE makes collaboration with other student organizations on and off campus an important factor in our mission.

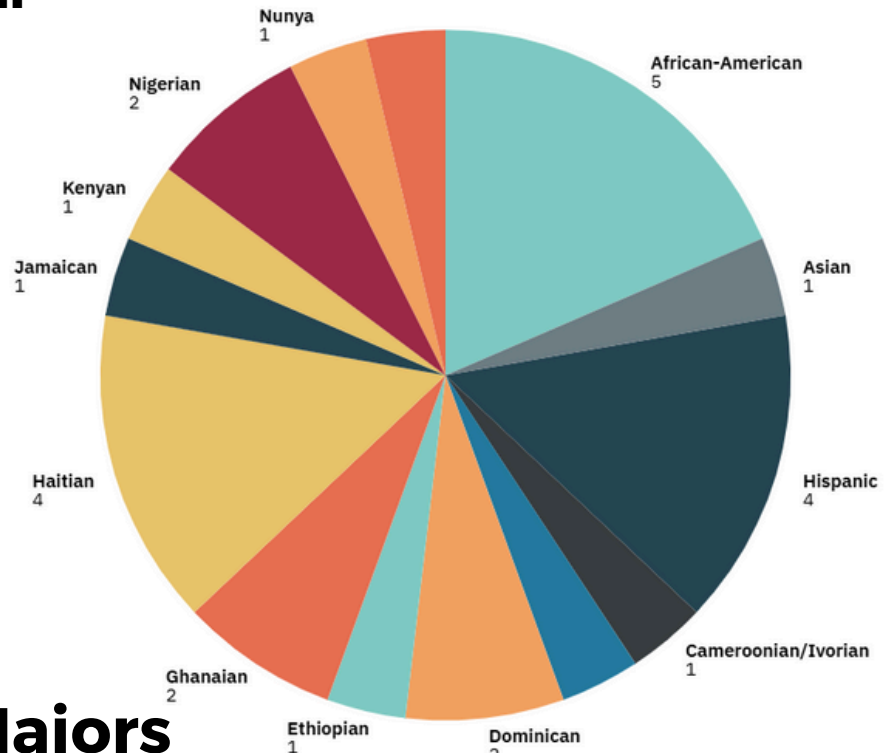


From Our Eyes

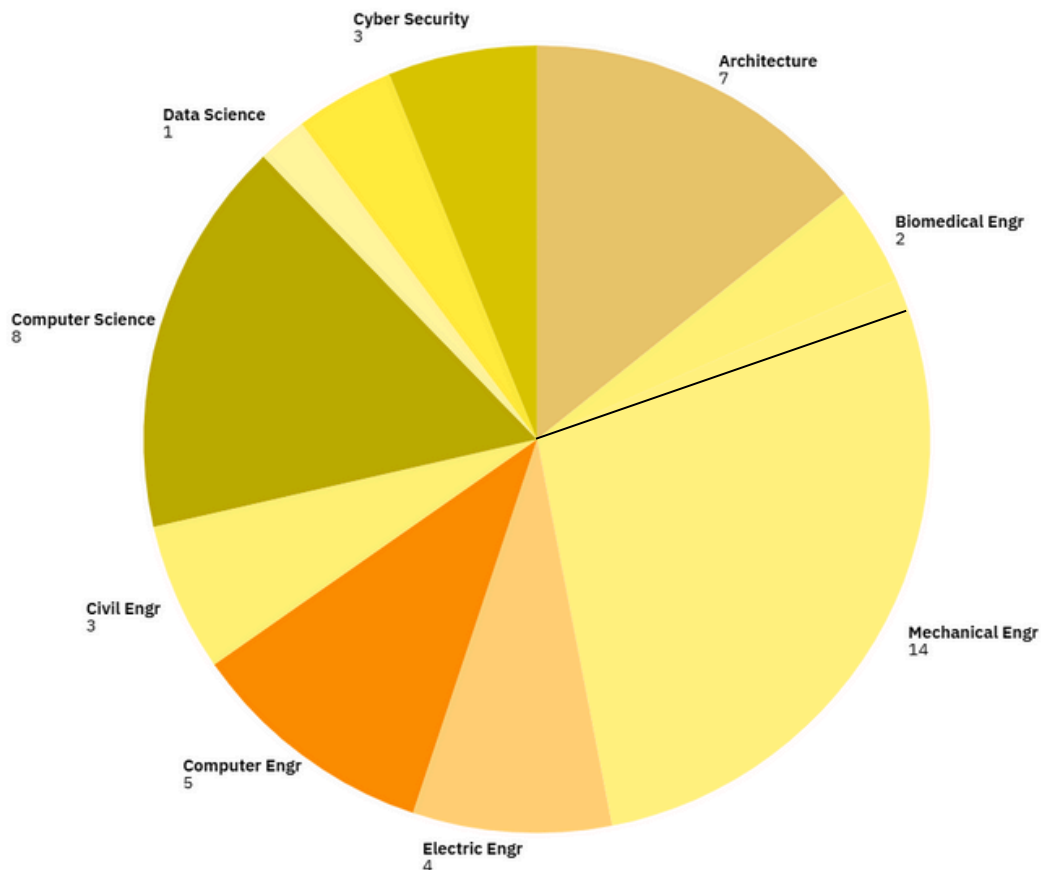
Ethnicities

Recorded Data from Our First General Body Meeting. *"The First of Many Meetings"* :

Wentworth NSBE represents motivated students from 9+ STEM disciplines and 12+ cultural backgrounds. Our tight-knit community fosters both individual growth and collective impact, creating personalized partnerships with industry leaders who value diversity, innovation, and community engagement.



WIT Majors



**Join us in
our walk
of
personal
growth
together!**

Testimonials

Modeling for WIT NSBE was a great experience. Despite having no prior modeling experience, the coaching staff, designers, and other models were very patient with me and they all helped to create a supportive, confident, and inspiring environment!

- Gabe

2023 Computer Science

Organizing the fashion show was an amazing experience that contributed to my personal growth at Wentworth. I am thankful for this experience as I was able to venture different avenues outside of my field of study. The skills that I've learned have been priceless.

- Harold

2023 Mechanical Engineering

NSBE has become an integral entity in defining who I am. As the saying goes, "he who climbs a good tree gets a good push." The good legacy of one member persuades others to join and people with diverse skills can cultivate a stronger vision.

- Kodwo

2024 MS Construction Management



Joining NSBE has completely changed the trajectory of my career. I have been able to meet some truly amazing people all while networking and planning for my future. I made friends along the way, visited new places, and experienced new things all due to being in NSBE.

- Clinton

2023 Mechanical Engineering

As a member in high school, and now a member in college, NSBE has been a significant catalyst in my college experience. Here at Wentworth, I have become more successful professionally and academically with the support and encouragement of NSBE members.

- Marcia

2024 Business Management

NSBE is an amazing club that allows for diversity among engineers in the Wentworth community. NSBE has not only helped me find a community that relates to me and understands me but it also helped me find myself. NSBE has allowed me to become the leader and person that I am today.

- Lanai

2026 Civil Engineering

Conferences

Impact

By attending regional and national conferences, our members sharpen their technical and professional skills, network with top recruiters, and often secure internships and job offers on the spot. Your sponsorship helps make this possible – and in return, you receive a direct connection to future-ready engineers eager to make an impact. It's more than support – it's a smart investment in your company's future workforce.

**"One
Fiyah"**



**"More
Fiyah"**

Transportation
(Round Trip)
\$100-\$200/member

Registration
\$200-\$300/member

Lodging
\$400-\$600

Cost Per Member
at lowest rate
\$700

Cost Per Member
at highest rate
\$1100

At the Fall Regional Conference (FRC), over the course of three days, every region becomes a catalyst for igniting academic brilliance and professional growth. FRC enables the collaboration of precollegiate, collegiate, alumni, and corporate representatives, helping to shape the futures of so many. Students can dive into captivating technical workshops, exhilarating competitions and much more.

Transportation
(Round Trip)
\$100-\$200/member

Registration
\$300-\$500/member

Lodging
\$400-\$600

Cost Per Member
at lowest rate
\$800

Cost Per Member
at highest rate
\$1300

At the NSBE National Convention, the largest event for the organization, over 10,000 participants are brought together from the United States, Canada, and West Africa. This gathering hosts over 40 admission groups and 300 company exhibitions. By attending the conference, our members can get involved in workshops/seminars, academic competitions, school fairs, a career fair and much more.

Why Sponsor Us?

To uphold the mission of NSBE.

By supporting our chapter, you're investing directly in the academic and professional success of Black engineering students. Our members are active year-round – attending conferences, leading outreach initiatives, and creating opportunities not just for themselves, but for the community around them.

To recruit exceptional talent – and not just any talent.

Wentworth NSBE students bring more than technical skill – they bring grit, leadership, and purpose. Our members are hands-on, professionally prepared, and ready to make an immediate impact. When you sponsor our chapter, you gain early access to some of the most driven and well-rounded future engineers in the industry.

Why Wentworth?

Because here, students aren't just taught – they're forged through real-world projects, co-ops, and a tight-knit, mission-driven community. If you're looking for talent that can think critically, lead boldly, and grow with your company – you'll find it here.



Sponsorship Packages

Silver
(\$1000+)

Diamond
(\$4000+)

Platinum
(\$9,000+)

**“Sponsor of the
Month” Spotlight
On WITNSBE Social
Media**



**Thank You Page
Inclusion on
WITNSBE Website**



**Company Recognition on
WIT NSBE Website +
Company Referrals**



**Company
Promotional Email**



**Dedicated Workshops +
Priority Referrals +
WITNSBE Global
Platform Recognition**



**Private Networking
Dinner with Official
Members + Tailored
Resume List**



Corporate Response Form

**National Society of Black Engineers
Wentworth Institute of Technology Chapter**

555 Huntington Ave, Boston, MA 02115

Contact - Treasurer, treasurer@witsnsbe.org

Carbon Copy (Cc) - The Executive Board EBoard@witsnsbe.org, Senior Associate Director of Industry Engagement:
bennetta5@wit.edu

Thank you for partnering with NSBE-WIT. Please fill out and return this form by email. All questions an be forwarded to the email above.

Company Name:	
Name of Representative:	
Title:	
Phone:	
Email:	
Mailing Address:	

Chapter Partnership:

<input type="checkbox"/> Silver	<input type="checkbox"/> Diamond	<input type="checkbox"/> Platinum	<input type="checkbox"/> Other
---------------------------------	----------------------------------	-----------------------------------	--------------------------------

Sponsorship Opportunities:

<input type="checkbox"/> Annual Conference(s)	<input type="checkbox"/> Spring Convention	<input type="checkbox"/> Community Outreach
<input type="checkbox"/> General Body Meeting	<input type="checkbox"/> Professional Development	<input type="checkbox"/> Donation

Pay by Check:

Addressed to: "Wentworth Institute of Technology"

Memo: "National Society of Black Engineers"

Mailed to: "550 Huntington Ave 02115, Center for Diversity and Global Engagement "